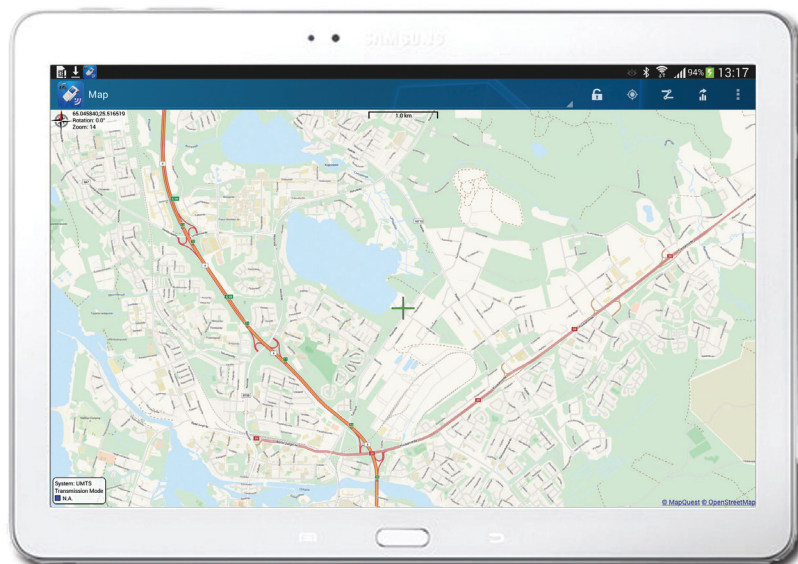


# Nemo Handy

## Network measurement and troubleshooting on the go

Nemo Handy provides you with smart and discreet solutions for thorough and advanced measurement and optimization of the wireless air interface and mobile application QoS/QoE.

# Anite



# Nemo Handy

## Highlights

- Technological leader - Nemo Handy has set the standard for handheld network measurement devices since 2005 and continues to do so today as the most widely deployed handheld measurement tool in the world.
- Extensive application testing features, such as FTP, HTTP, Browsing, YouTube, and Facebook testing
- Map navigation based on Google Maps
- Smart and inconspicuous - Ideal solution for indoor measurements on the latest Android terminals.
- Floorplans with markers and geodetic coordinates
- Enables geocoding indoor floorplans on top of OpenStreetMap
- Nemo Handy is your regular phone and measurement tool in one device.
- Vendor independence - Open Nemo File Format enables full and proven compatibility with third-party tools.
- Audio Quality and Video Quality streaming tests (POLQA, PESQ, PEVQ-S)
- DRT431 1B and SeeGull® IBflex® scanner support
- Support for Qualcomm, Broadcom, and Samsung Shannon chipsets
- Nemo Cloud option - a cloud-based platform for centralized remote control
- Optional Nemo InstantReport, a quick way to create reports in the field

# Anite

specialist  
wireless testing  
technology

## Widest selection of Android-based devices on the market

The handheld Nemo Handy products are highly suitable for performing measurements both outdoors and in busy and crowded indoor spaces while being simultaneously used as a regular mobile phone. Nemo Handy products provide you with the best real-time measurement visualization on the handheld market.

In addition to a rich variety of real-time displays, all RF and signaling data is logged to phone's internal storage. Log files are made available in Nemo file format that allows easy post-processing with Nemo Outdoor playback, Nemo Analyze, or third-party post-processing tools.



## Nemo Handy editions

Nemo Handy offers three product editions with different levels of feature support:

- **Nemo Handy Field Test (FT)** - Instant, on-the-spot measurements and diagnostics
- **Nemo Handy Pro** - A fully-fledged handheld measurement tool with scripts, map and playback support. Optional features in Nemo Handy Pro include POLQA and PESQ voice quality measurements, PEVQ-S video quality measurements, and preconfigured or remote-controlled autonomous measurements
- **Nemo Handy QualityApp** - An advanced application for measuring the quality of end-user experience, intended for operators and service providers to understand the perceived end-user experience when using mobile services and applications. The application works on any Android device and provides a limited amount of RF parameters - more than current OTT application, less than professional handheld measurement tools.
- **Nemo Handy Autonomous** - Centralized remote control or preconfigured measurements of field measurement units for unattended network testing.

## Most widely deployed handheld tool on the market

Nemo Handy is supported on the latest Android-based terminals, such as Samsung Galaxy S7, Samsung Galaxy S6 edge, Samsung Galaxy S6, Samsung Note 4, Samsung Galaxy S5 4G+, and Sony Xperia Z5. Nemo Handy supports the measuring and monitoring of GSM, CDMA, EVDO, WCDMA, HSPA, HSPA+, LTE/ LTE cat. 9, and WiFi (HetNet) wireless networks, and mobile application QoS/QoE. Nemo Handy enables **Voice quality measurements** based on the POLQA and PESQ algorithms both in uplink and downlink directions and in Super Wideband and Narrowband measurement modes. Individual MOS scores are displayed real-time.

[www.anite.com/nemo](http://www.anite.com/nemo)

Information given in this publication is subject to change without prior notice. Anite reserves the right to change specifications without prior notice. All trademarks herein are the property of their respective owners.

# NEMO